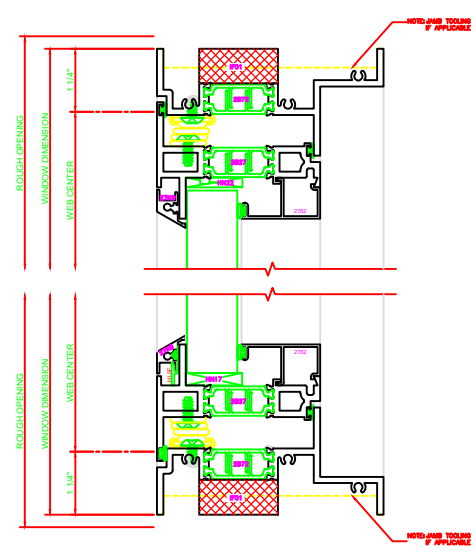


440 JAMB  
SERIES: 450G  
CASEMENT OUT  
4-BAR ARMS

441 JAMB  
SERIES: 450G  
CASEMENT OUT

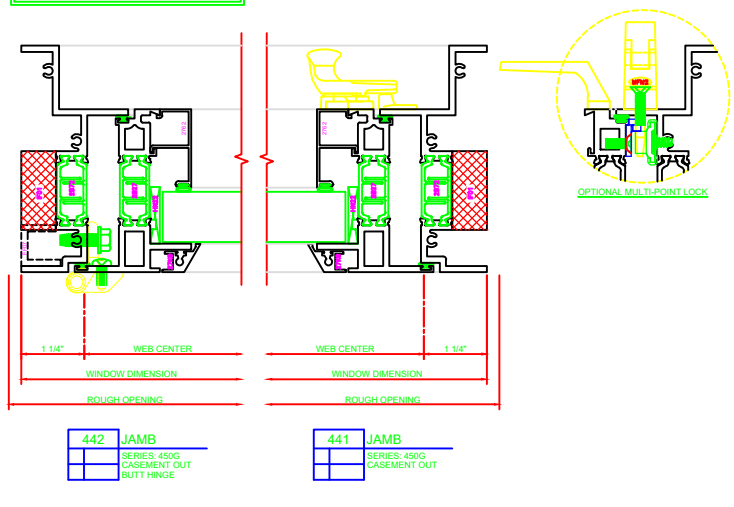
140 HEAD  
SERIES: 450G  
CASEMENT OUT  
4-BAR ARMS

240 SILL  
SERIES: 450G  
CASEMENT OUT  
4-BAR ARMS



## 4-BAR ARMS BUTT HINGE

**ERECTOR NOTE:**  
THE HINGED JAMB FRAME SHALL BE INSTALLED PLUMB. ALL HINGES SHALL BE SECURELY BLOCKED AND ANCHORED TO THE CONDITION THROUGH THE HINGES OR AS CLOSE AS POSSIBLE TO THE HINGES.



442 JAMB  
SERIES: 450G  
CASEMENT OUT  
BUTT HINGE

441 JAMB  
SERIES: 450G  
CASEMENT OUT

141 HEAD  
SERIES: 450G  
CASEMENT OUT  
BUTT HINGE

241 SILL  
SERIES: 450G  
CASEMENT OUT  
BUTT HINGE

